



HILLWOOD
HOMES

SKYE MEADOWS

TUNDRA PLAN



2 - 5 BEDROOMS | 1.5 - 4.5 BATHROOMS | 3 CAR GARAGE
1,817 FINISHED SQ. FT. | 3,634 TOTAL SQ. FT.

HOME FEATURES

- Primary Bedroom on Main Floor
- Open Kitchen and Living Room
- Kitchen Island
- Master Bedroom Walk-in Closet
- Mud and Laundry Room off Garage
- 9' Ceilings on Main Floor and Basement
- 8' Doors on Main Floor
- Quartz Countertops in Kitchen and Bathrooms
- Tile Flooring in Bathroom and Laundry
- Moen Gibson Chrome plumbing fixtures
- Stainless Steel Whirlpool Appliances
- Energy Saving Low-E Dual Glazed White Vinyl Windows
- Full Front Yard Landscaping with Automatic Sprinkler System

MAIN FLOOR

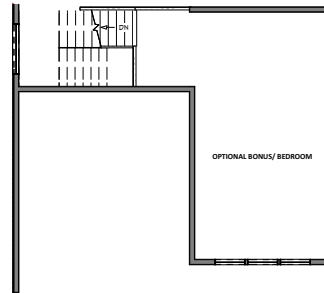
Approx 1,817 Sq. Ft.



HILLWOOD HOMES

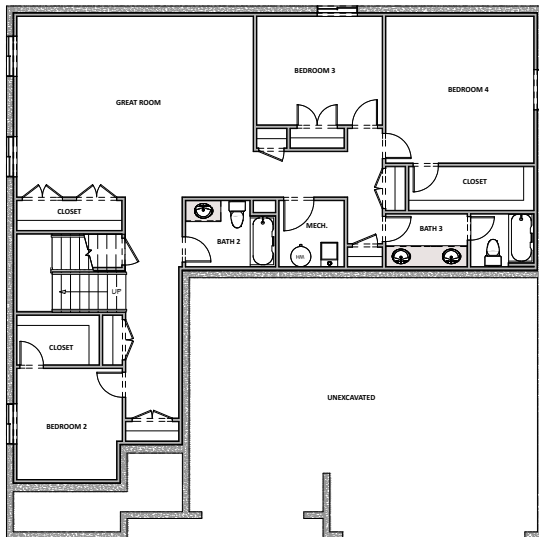
OPTIONAL BONUS ROOM

Approx 516 Sq. Ft.



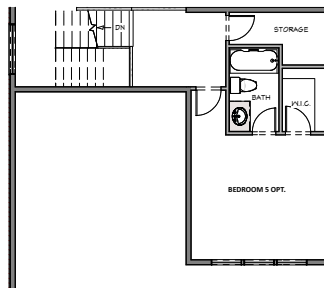
OPTIONAL FINISHED BASEMENT

Approx 1,817 Sq. Ft.



OPTIONAL 5TH BED/BATH

Approx 516 Sq. Ft.



Hillwood Homes Sales | 801.917.2837

HillwoodHomes.com