



HILLWOOD
HOMES

SKYE MEADOWS

BLOSSOM PLAN



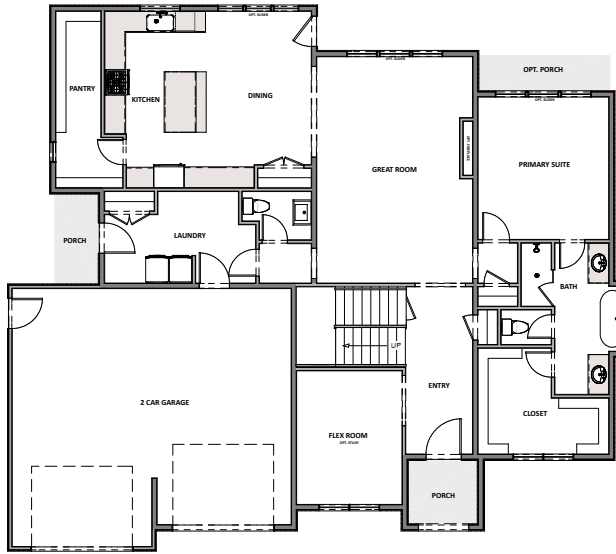
4 - 8 BEDROOMS | 3.5 - 5.5 BATHROOMS | 2 - 4 CAR GARAGE
3,150 FINISHED SQ. FT. | 5,120 TOTAL SQ. FT.

HOME FEATURES

- Primary Bedroom on Main Floor
- Open Kitchen and Living Room
- Kitchen Island
- Master Bedroom Walk-in Closet
- Mud and Laundry Room off Garage
- 9' Ceilings on Main Floor and Basement
- 8' Doors on Main Floor
- Quartz Countertops in Kitchen and Bathrooms
- Tile Flooring in Bathroom and Laundry
- Moen Gibson Chrome plumbing fixtures
- Stainless Steel Whirlpool Appliances
- Energy Saving Low-E Dual Glazed White Vinyl Windows
- Full Front Yard Landscaping with Automatic Sprinkler System

MAIN FLOOR

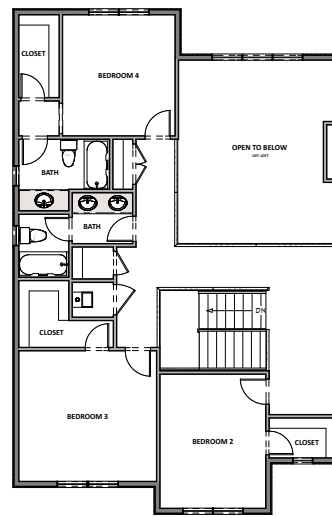
Approx 1,970 Sq. Ft.



HILLWOOD HOMES

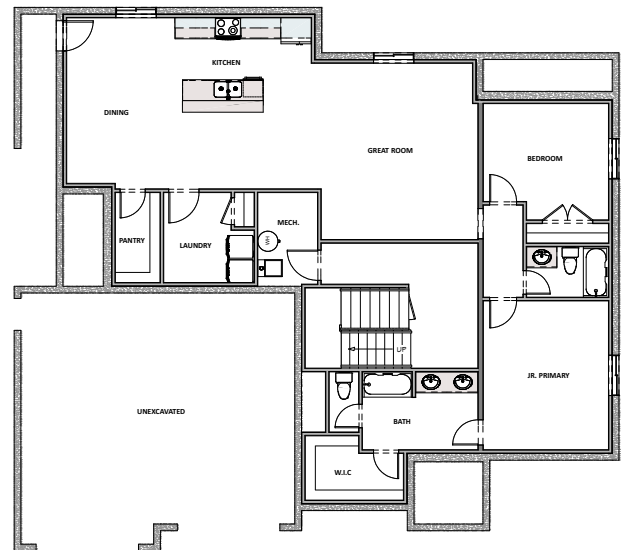
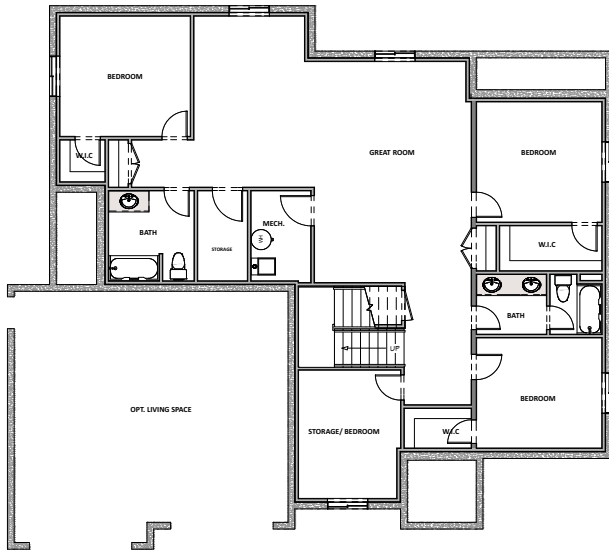
UPPER FLOOR

Approx 1,180 Sq. Ft.



OPTIONAL FINISHED BASEMENT

Approx 1,970 Sq. Ft.



ADU BASEMENT LAYOUT

Hillwood Homes Sales | 801.917.2837

HillwoodHomes.com