



HILLWOOD
HOMES

SKYE MEADOWS

GRASSLAND PLAN



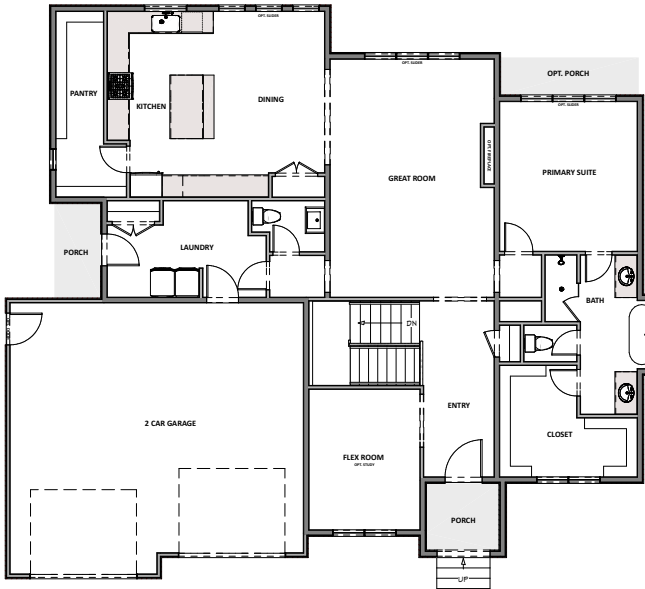
2 - 6 BEDROOMS | 1.5 - 3.5 BATHROOMS | 2 - 4 CAR GARAGE
1,939 FINISHED SQ. FT. | 3,878 TOTAL SQ. FT.

HOME FEATURES

- Primary Bedroom on Main Floor
- Open Kitchen and Living Room
- Kitchen Island
- Master Bedroom Walk-in Closet
- Mud and Laundry Room off Garage
- 9' Ceilings on Main Floor and Basement
- 8' Doors on Main Floor
- Quartz Countertops in Kitchen and Bathrooms
- Tile Flooring in Bathroom and Laundry
- Moen Gibson Chrome plumbing fixtures
- Stainless Steel Whirlpool Appliances
- Energy Saving Low-E Dual Glazed White Vinyl Windows
- Full Front Yard Landscaping with Automatic Sprinkler System

MAIN FLOOR

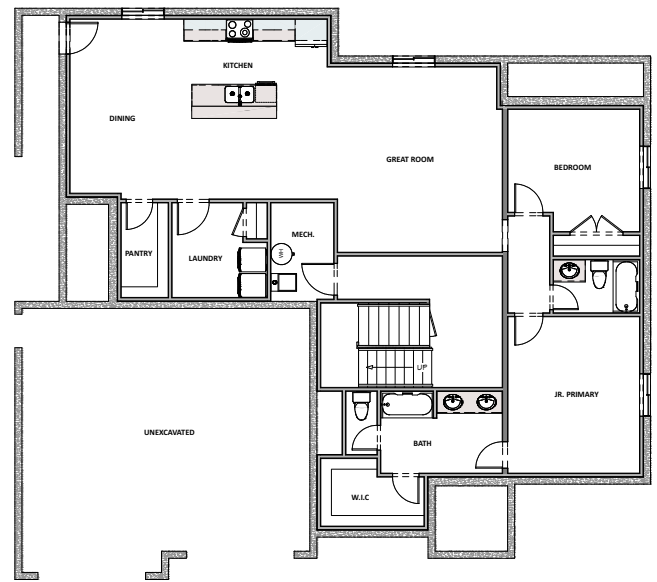
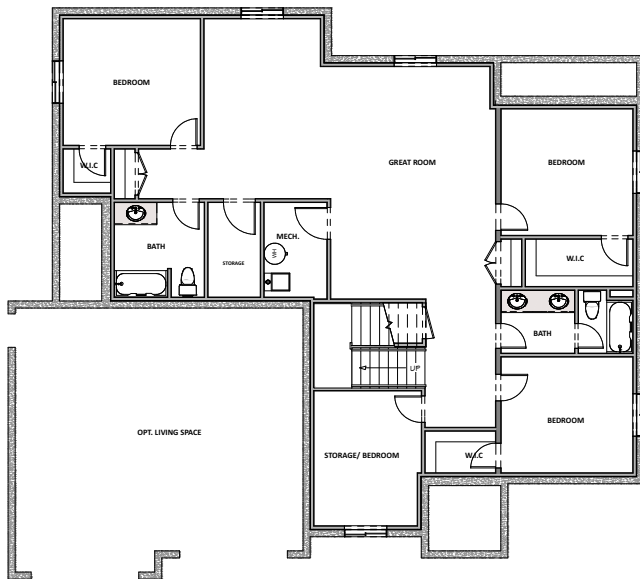
Approx 1,939 Sq. Ft.



HILLWOOD HOMES

FINISHED BASEMENT

Approx 1,939 Sq. Ft.



ADU BASEMENT LAYOUT

Hillwood Homes Sales | 801.917.2837

HillwoodHomes.com